

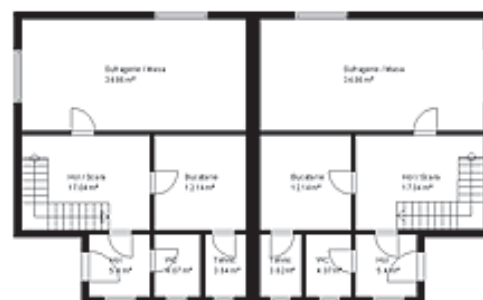


vedere zi



vedere noapte

PARTER	90,37	73,51	73,51
<i>suprafata in mp</i>	<i>construita</i>	<i>desfasurata</i>	<i>locuabila</i>
Sufragerie / Masa		34,86	34,86
Hol / Scara		17,04	17,04
Bucatarie		12,14	12,14
Hol		05,40	05,40
WC		04,07	04,07
Spatiu tehnic		03,64	03,64



PARTER

MANSARDA (semimansardat)	75,09	44,17	44,17
<i>suprafata in mp</i>	<i>construita</i>	<i>desfasurata</i>	<i>locuabila >= 1,5m</i>
Dormitor 1		14,89	14,89
Dormitor 2		17,04	17,04
Dormitor 3		12,24	12,24
Baie		08,88	08,88
Hol		09,62	09,62



MANSARDA

TOTAL	165,46	117,68	117,68
--------------	---------------	---------------	---------------

SUPRAFETE